

Mouse Ki67P (Ki-67 Protein) Sandwich ELISA Kit Ready-To-Use Kit (STJE0016534)

STJE0016534

GENERAL INFORMATION

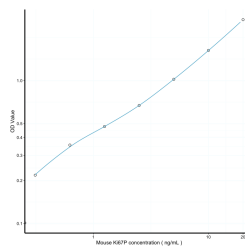
| | |
|--------------------------|---|
| Product Type | Kits |
| Short Description | This Ki67P Sandwich ELISA Kit, Ready-To-Use is an in-vitro enzyme-linked immunosorbent assay for the measurement of samples in mouse tissue homogenates, cell lysates, cell culture supernates or other biological fluids.. |
| Applications | ELISA |
| Reactivity | Mouse |

PRODUCT PROPERTIES

| | |
|------------------------|--|
| Detection | 0.312-20ng/mL |
| Sensitivity | 0.108ng/mL |
| Detection Limit | 0.312-20ng/mL |
| Assay Time | 3 hrs |
| Storage | The whole kit may be stored at -20°C for up to 12 months from receipt. An unopened kit may be stored in the fridge at 2-8°C for up to 6 months. Once opened store individual kit contents according to components table provided with the kit. |
| Instruction | |
| Note | STRICTLY FOR FURTHER SCIENTIFIC RESEARCH USE ONLY (RUO). MUST NOT TO BE USED IN DIAGNOSTIC OR THERAPEUTIC APPLICATIONS. |

TARGET INFORMATION

| | |
|---------------------|---|
| Sample Types | tissue homogenates, cell lysates, cell culture supernates or other biological fluids. |
| Gene | Mki67 |
| Symbol | |
| Uniprot ID | K167_MOUSE |



This product is suitable for in-vitro studies under the RESEARCH USE ONLY [RUO] licence. This product must not be used as for diagnostic or other medical purposes.
St John's Laboratory Ltd, Knowledge Dock Business Centre, University Way, London, E16 2RD | Tel: 0208 223 3081