

Rat CHRNa1 (Cholinergic Receptor, Nicotinic, Alpha 1) Sandwich ELISA Kit Ready-To-Use Kit (STJE0014315)

STJE0014315

GENERAL INFORMATION

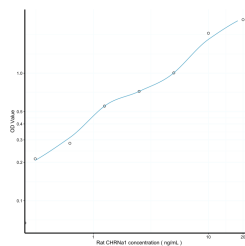
Product Type	Kits
Short Description	This CHRNa1 Sandwich ELISA Kit, Ready-To-Use is an in-vitro enzyme-linked immunosorbent assay for the measurement of samples in rat tissue homogenates or other biological fluids..
Applications	ELISA
Reactivity	Rat

PRODUCT PROPERTIES

Detection	0.312-20ng/mL
Sensitivity	0.122ng/mL
Detection Limit	0.312-20ng/mL
Assay Time	3 hrs
Storage	The whole kit may be stored at -20°C for up to 12 months from receipt. An unopened kit may be stored in the fridge at 2-8°C for up to 6 months. Once opened store individual kit contents according to components table provided with the kit.
Note	STRICTLY FOR FURTHER SCIENTIFIC RESEARCH USE ONLY (RUO). MUST NOT TO BE USED IN DIAGNOSTIC OR THERAPEUTIC APPLICATIONS.

TARGET INFORMATION

Sample Types	tissue homogenates or other biological fluids.
Gene	Chrna1
Symbol	
Uniprot ID	ACHA_RAT



This product is suitable for in-vitro studies under the RESEARCH USE ONLY [RUO] licence. This product must not be used as for diagnostic or other medical purposes.
St John's Laboratory Ltd, Knowledge Dock Business Centre, University Way, London, E16 2RD | Tel: 0208 223 3081