

## Bovine CCKAR (Cholecystokinin A Receptor) Sandwich ELISA Kit Ready-To-Use Kit (STJE0014125)

STJE0014125

### GENERAL INFORMATION

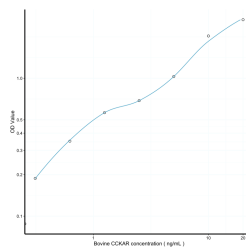
|                          |   |
|--------------------------|---|
| <b>Product Type</b>      | Kits  |
| <b>Short Description</b> | This CCKAR Sandwich ELISA Kit, Ready-To-Use is an in-vitro enzyme-linked immunosorbent assay for the measurement of samples in bovine tissue homogenates or other biological fluids.. |
| <b>Applications</b>      | ELISA   |
| <b>Reactivity</b>        | Bovine  |

### PRODUCT PROPERTIES

|                        |  |
|------------------------|--|
| <b>Detection</b>       | 0.312-20ng/mL  |
| <b>Sensitivity</b>     | 0.119ng/mL   |
| <b>Detection Limit</b> | 0.312-20ng/mL  |
| <b>Assay Time</b>      | 3 hrs  |
| <b>Storage</b>         | The whole kit may be stored at -20°C for up to 12 months from receipt. An unopened kit may be stored in the fridge at 2-8°C for up to 6 months. Once opened store individual kit contents according to components table provided with the kit. |
| <b>Instruction</b>     |  |
| <b>Note</b>            | STRICTLY FOR FURTHER SCIENTIFIC RESEARCH USE ONLY (RUO). MUST NOT TO BE USED IN DIAGNOSTIC OR THERAPEUTIC APPLICATIONS.  |

### TARGET INFORMATION

|                     |  |
|---------------------|--|
| <b>Sample Types</b> | tissue homogenates or other biological fluids. |
| <b>Gene Symbol</b>  |  |
| <b>Uniprot ID</b>   |  |



This product is suitable for in-vitro studies under the RESEARCH USE ONLY [RUO] licence. This product must not be used as for diagnostic or other medical purposes.  
St John's Laboratory Ltd, Knowledge Dock Business Centre, University Way, London, E16 2RD | Tel: 0208 223 3081