

Equine TIMP2 (Tissue Inhibitors Of Metalloproteinase 2) Sandwich ELISA Kit Kit (STJE0012590)

STJE0012590

GENERAL INFORMATION

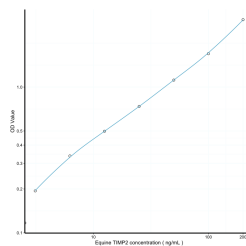
Product Type	Kits
Short Description	This TIMP2 Sandwich ELISA Kit is an in-vitro enzyme-linked immunosorbent assay for the measurement of samples in equine serum, plasma, tissue homogenates or other biological fluids..
Applications	ELISA
Reactivity	Equine

PRODUCT PROPERTIES

Detection	3.12-200ng/mL
Sensitivity	1.49ng/mL
Detection Limit	3.12-200ng/mL
Assay Time	4.5 hrs
Storage Instruction	Store the unopened kit in the fridge at 2-8°C for up to 6 months. Once opened store individual kit contents according to components table provided with the kit.
Note	STRICTLY FOR FURTHER SCIENTIFIC RESEARCH USE ONLY (RUO). MUST NOT TO BE USED IN DIAGNOSTIC OR THERAPEUTIC APPLICATIONS.

TARGET INFORMATION

Sample Types	serum, plasma, tissue homogenates or other biological fluids.
Gene Symbol	
Uniprot ID	



This product is suitable for in-vitro studies under the RESEARCH USE ONLY [RUO] licence. This product must not be used as for diagnostic or other medical purposes.
St John's Laboratory Ltd, Knowledge Dock Business Centre, University Way, London, E16 2RD | Tel: 0208 223 3081