

Mouse SLC30A7 (Solute Carrier Family 30 Member 7) Sandwich ELISA Kit Kit (STJE0012208)

STJE0012208

GENERAL INFORMATION

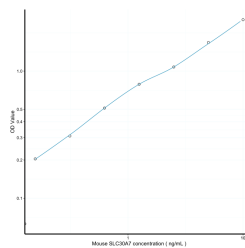
| | |
|--------------------------|--|
| Product Type | Kits |
| Short Description | This SLC30A7 Sandwich ELISA Kit is an in-vitro enzyme-linked immunosorbent assay for the measurement of samples in mouse tissue homogenates or other biological fluids.. |
| Applications | ELISA |
| Reactivity | Mouse |

PRODUCT PROPERTIES

| | |
|------------------------|--|
| Detection | 0.156-10ng/mL |
| Sensitivity | 0.053ng/mL |
| Detection Limit | 0.156-10ng/mL |
| Assay Time | 4.5 hrs |
| Storage | Store the unopened kit in the fridge at 2-8°C for up to 6 months. Once opened store individual kit contents according to components table provided with the kit. |
| Instruction | |
| Note | STRICTLY FOR FURTHER SCIENTIFIC RESEARCH USE ONLY (RUO). MUST NOT TO BE USED IN DIAGNOSTIC OR THERAPEUTIC APPLICATIONS. |

TARGET INFORMATION

| | |
|---------------------|--|
| Sample Types | tissue homogenates or other biological fluids. |
| Gene Symbol | Slc30a7 |
| Uniprot ID | ZNT7_MOUSE |



This product is suitable for in-vitro studies under the RESEARCH USE ONLY [RUO] licence. This product must not be used as for diagnostic or other medical purposes.
St John's Laboratory Ltd, Knowledge Dock Business Centre, University Way, London, E16 2RD | Tel: 0208 223 3081