

## Mouse RAB5A (RAB5A, Member RAS Oncogene Family) Sandwich ELISA Kit Kit (STJE0011803)

STJE0011803

### GENERAL INFORMATION

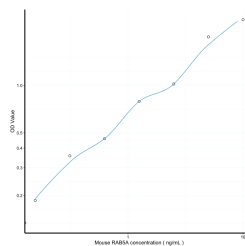
<b>Product Type</b>	Kits
<b>Short Description</b>	This RAB5A Sandwich ELISA Kit is an in-vitro enzyme-linked immunosorbent assay for the measurement of samples in mouse tissue homogenates, cell lysates or other biological fluids..
<b>Applications</b>	ELISA
<b>Reactivity</b>	Mouse

### PRODUCT PROPERTIES

<b>Detection</b>	0.156-10ng/mL
<b>Sensitivity</b>	0.062ng/mL
<b>Detection Limit</b>	0.156-10ng/mL
<b>Assay Time</b>	4.5 hrs
<b>Storage</b>	Store the unopened kit in the fridge at 2-8°C for up to 6 months. Once opened store individual kit contents according to components table provided with the kit.
<b>Note</b>	STRICTLY FOR FURTHER SCIENTIFIC RESEARCH USE ONLY (RUO). MUST NOT TO BE USED IN DIAGNOSTIC OR THERAPEUTIC APPLICATIONS.

### TARGET INFORMATION

<b>Sample Types</b>	tissue homogenates, cell lysates or other biological fluids.
<b>Gene Symbol</b>	<a href="#">Rab5a</a>
<b>Uniprot ID</b>	<a href="#">RAB5A_MOUSE</a>



This product is suitable for in-vitro studies under the RESEARCH USE ONLY [RUO] licence. This product must not be used as for diagnostic or other medical purposes.  
St John's Laboratory Ltd, Knowledge Dock Business Centre, University Way, London, E16 2RD | Tel: 0208 223 3081