

## Human HPD (4-Hydroxyphenylpyruvate Dioxygenase) Sandwich ELISA Kit Kit (STJE0009496)

STJE0009496

### GENERAL INFORMATION

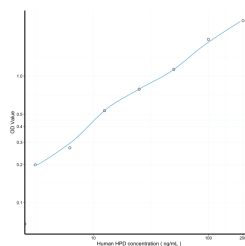
|                          |   |
|--------------------------|---|
| <b>Product Type</b>      | Kits  |
| <b>Short Description</b> | This HPD Sandwich ELISA Kit is an in-vitro enzyme-linked immunosorbent assay for the measurement of samples in human serum, plasma, tissue homogenates or other biological fluids.. |
| <b>Applications</b>      | ELISA   |
| <b>Reactivity</b>        | Human   |

### PRODUCT PROPERTIES

|                            |  |
|----------------------------|--|
| <b>Detection</b>           | 3.12-200ng/mL  |
| <b>Sensitivity</b>         | 1.21ng/mL  |
| <b>Detection Limit</b>     | 3.12-200ng/mL  |
| <b>Assay Time</b>          | 4.5 hrs  |
| <b>Storage Instruction</b> | Store the unopened kit in the fridge at 2-8°C for up to 6 months. Once opened store individual kit contents according to components table provided with the kit. |
| <b>Note</b>                | STRICTLY FOR FURTHER SCIENTIFIC RESEARCH USE ONLY (RUO). MUST NOT TO BE USED IN DIAGNOSTIC OR THERAPEUTIC APPLICATIONS.  |

### TARGET INFORMATION

|                     |   |
|---------------------|---|
| <b>Sample Types</b> | serum, plasma, tissue homogenates or other biological fluids. |
| <b>Gene Symbol</b>  | HPD   |
| <b>Uniprot ID</b>   | HPPD_HUMAN  |



This product is suitable for in-vitro studies under the RESEARCH USE ONLY [RUO] licence. This product must not be used as for diagnostic or other medical purposes.  
St John's Laboratory Ltd, Knowledge Dock Business Centre, University Way, London, E16 2RD | Tel: 0208 223 3081