

## Mouse GP1Bb (Glycoprotein Ib Beta Polypeptide, Platelet) Sandwich ELISA Kit Kit (STJE0009240)

STJE0009240

### GENERAL INFORMATION

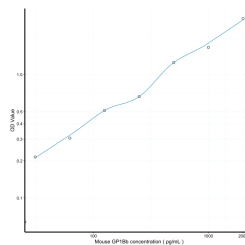
<b>Product Type</b>	Kits
<b>Short Description</b>	This GP1Bb Sandwich ELISA Kit is an in-vitro enzyme-linked immunosorbent assay for the measurement of samples in mouse plasma..
<b>Applications</b>	ELISA
<b>Reactivity</b>	Mouse

### PRODUCT PROPERTIES

<b>Detection Sensitivity</b>	31.2-2000pg/mL
<b>Detection Limit</b>	14.7pg/mL
<b>Assay Time</b>	31.2-2000pg/mL
<b>Storage</b>	4.5 hrs
<b>Instruction</b>	Store the unopened kit in the fridge at 2-8°C for up to 6 months. Once opened store individual kit contents according to components table provided with the kit.
<b>Note</b>	STRICTLY FOR FURTHER SCIENTIFIC RESEARCH USE ONLY (RUO). MUST NOT TO BE USED IN DIAGNOSTIC OR THERAPEUTIC APPLICATIONS.

### TARGET INFORMATION

<b>Sample Types</b>	plasma.
<b>Gene Symbol</b>	<a href="#">Gp1bb</a>
<b>Uniprot ID</b>	<a href="#">GP1BB_MOUSE</a>



This product is suitable for in-vitro studies under the RESEARCH USE ONLY [RUO] licence. This product must not be used as for diagnostic or other medical purposes.  
St John's Laboratory Ltd, Knowledge Dock Business Centre, University Way, London, E16 2RD | Tel: 0208 223 3081