

## Goat GHRH (Growth Hormone Releasing Hormone) Sandwich ELISA Kit (STJE0009157)

STJE0009157

### GENERAL INFORMATION

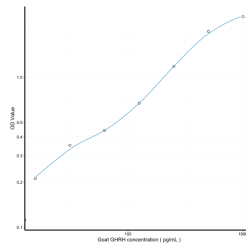
<b>Product Type</b>	Kits
<b>Short Description</b>	This GHRH Sandwich ELISA Kit is an in-vitro enzyme-linked immunosorbent assay for the measurement of samples in goat serum, plasma or other biological fluids..
<b>Applications</b>	ELISA
<b>Reactivity</b>	Goat

### PRODUCT PROPERTIES

<b>Detection</b>	15.6-1000pg/mL
<b>Sensitivity</b>	6.4pg/mL
<b>Detection Limit</b>	15.6-1000pg/mL
<b>Assay Time</b>	4.5 hrs
<b>Storage Instruction</b>	Store the unopened kit in the fridge at 2-8°C for up to 6 months. Once opened store individual kit contents according to components table provided with the kit.
<b>Note</b>	STRICTLY FOR FURTHER SCIENTIFIC RESEARCH USE ONLY (RUO). MUST NOT TO BE USED IN DIAGNOSTIC OR THERAPEUTIC APPLICATIONS.

### TARGET INFORMATION

<b>Sample Types</b>	serum, plasma or other biological fluids.
<b>Gene Symbol</b>	
<b>Uniprot ID</b>	



This product is suitable for in-vitro studies under the RESEARCH USE ONLY [RUO] licence. This product must not be used as for diagnostic or other medical purposes.  
 St John's Laboratory Ltd, Knowledge Dock Business Centre, University Way, London, E16 2RD | Tel: 0208 223 3081