

## Rat ERb (Estrogen Receptor Beta) Sandwich ELISA Kit (STJE0008688)

STJE0008688

### GENERAL INFORMATION

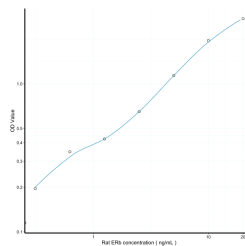
|                          |  |
|--------------------------|--|
| <b>Product Type</b>      | Kits   |
| <b>Short Description</b> | This ERb Sandwich ELISA Kit is an in-vitro enzyme-linked immunosorbent assay for the measurement of samples in rat tissue homogenates, cell lysates or other biological fluids.. |
| <b>Applications</b>      | ELISA  |
| <b>Reactivity</b>        | Rat  |

### PRODUCT PROPERTIES

|                            |  |
|----------------------------|--|
| <b>Detection</b>           | 0.312-20ng/mL  |
| <b>Sensitivity</b>         | 0.112ng/mL   |
| <b>Detection Limit</b>     | 0.312-20ng/mL  |
| <b>Assay Time</b>          | 4.5 hrs  |
| <b>Storage Instruction</b> | Store the unopened kit in the fridge at 2-8°C for up to 6 months. Once opened store individual kit contents according to components table provided with the kit. |
| <b>Note</b>                | STRICTLY FOR FURTHER SCIENTIFIC RESEARCH USE ONLY (RUO). MUST NOT TO BE USED IN DIAGNOSTIC OR THERAPEUTIC APPLICATIONS.  |

### TARGET INFORMATION

|                     |  |
|---------------------|--|
| <b>Sample Types</b> | tissue homogenates, cell lysates or other biological fluids. |
| <b>Gene Symbol</b>  | <a href="#">Esr2</a>   |
| <b>Uniprot ID</b>   | <a href="#">ESR2_RAT</a>                                     |



This product is suitable for in-vitro studies under the RESEARCH USE ONLY [RUO] licence. This product must not be used as for diagnostic or other medical purposes.  
 St John's Laboratory Ltd, Knowledge Dock Business Centre, University Way, London, E16 2RD | Tel: 0208 223 3081