

Universal EPI (Epinephrine) Competitive ELISA Kit (STJE0008668)

STJE0008668

GENERAL INFORMATION

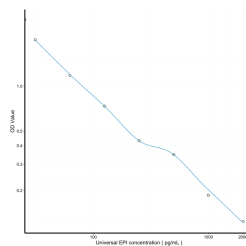
Product	Kits
Type	
Short	This EPI Competitive ELISA Kit is an in-vitro enzyme-linked immunosorbent assay for the measurement of samples in universal serum, plasma, tissue homogenates, cell lysates, cell culture supernates or other biological fluids..
Description	
Applications	ELISA
Reactivity	Universal

PRODUCT PROPERTIES

Detection	31.2-2000pg/mL
Sensitivity	8.62pg/mL
Detection	31.2-2000pg/mL
Limit	
Assay Time	2.5 hrs
Storage	Store the unopened kit in the fridge at 2-8°C for up to 6 months. Once opened store individual kit contents according to components table provided with the kit.
Instruction	
Note	STRICTLY FOR FURTHER SCIENTIFIC RESEARCH USE ONLY (RUO). MUST NOT TO BE USED IN DIAGNOSTIC OR THERAPEUTIC APPLICATIONS.

TARGET INFORMATION

Sample	serum, plasma, tissue homogenates, cell lysates, cell culture supernates or other biological fluids.
Types	
Gene	
Symbol	
Uniprot ID	



This product is suitable for in-vitro studies under the RESEARCH USE ONLY [RUO] licence. This product must not be used as for diagnostic or other medical purposes.
 St John's Laboratory Ltd, Knowledge Dock Business Centre, University Way, London, E16 2RD | Tel: 0208 223 3081