

Mouse CLDN5 (Claudin 5) Sandwich ELISA Kit (STJE0007983)

STJE0007983

GENERAL INFORMATION

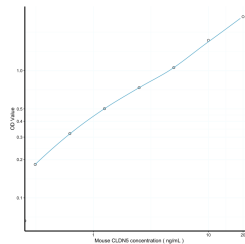
Product Type	Kits
Short Description	This CLDN5 Sandwich ELISA Kit is an in-vitro enzyme-linked immunosorbent assay for the measurement of samples in mouse tissue homogenates, cell lysates or other biological fluids..
Applications	ELISA
Reactivity	Mouse

PRODUCT PROPERTIES

Detection	0.312-20ng/mL
Sensitivity	0.127ng/mL
Detection Limit	0.312-20ng/mL
Assay Time	4.5 hrs
Storage Instruction	Store the unopened kit in the fridge at 2-8°C for up to 6 months. Once opened store individual kit contents according to components table provided with the kit.
Note	STRICTLY FOR FURTHER SCIENTIFIC RESEARCH USE ONLY (RUO). MUST NOT TO BE USED IN DIAGNOSTIC OR THERAPEUTIC APPLICATIONS.

TARGET INFORMATION

Sample Types	tissue homogenates, cell lysates or other biological fluids.
Gene Symbol	Cldn5
Uniprot ID	CLD5_MOUSE



This product is suitable for in-vitro studies under the RESEARCH USE ONLY [RUO] licence. This product must not be used as for diagnostic or other medical purposes.
St John's Laboratory Ltd, Knowledge Dock Business Centre, University Way, London, E16 2RD | Tel: 0208 223 3081