

Rat CELSR2 (Cadherin EGF LAG Seven Pass G-Type Receptor 2) Sandwich ELISA Kit Kit (STJE0007876)

STJE0007876

GENERAL INFORMATION

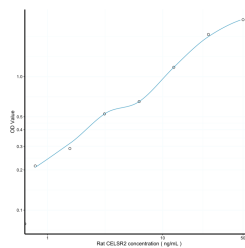
Product Type	Kits
Short Description	This CELSR2 Sandwich ELISA Kit is an in-vitro enzyme-linked immunosorbent assay for the measurement of samples in rat tissue homogenates or other biological fluids..
Applications	ELISA
Reactivity	Rat

PRODUCT PROPERTIES

Detection	0.781-50ng/mL
Sensitivity	0.24ng/mL
Detection Limit	0.781-50ng/mL
Assay Time	4.5 hrs
Storage	Store the unopened kit in the fridge at 2-8°C for up to 6 months. Once opened store individual kit contents according to components table provided with the kit.
Instruction	STRICTLY FOR FURTHER SCIENTIFIC RESEARCH USE ONLY (RUO). MUST NOT TO BE USED IN DIAGNOSTIC OR THERAPEUTIC APPLICATIONS.
Note	

TARGET INFORMATION

Sample Types	tissue homogenates or other biological fluids.
Gene Symbol	Celsr2
Uniprot ID	CELRL2_RAT



This product is suitable for in-vitro studies under the RESEARCH USE ONLY [RUO] licence. This product must not be used as for diagnostic or other medical purposes.
St John's Laboratory Ltd, Knowledge Dock Business Centre, University Way, London, E16 2RD | Tel: 0208 223 3081