

Human ATP1b4 (ATPase, Na⁺/K⁺ Transporting Beta 4 Polypeptide) Sandwich ELISA Kit Kit (STJE0007381)

STJE0007381

GENERAL INFORMATION

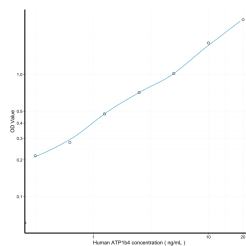
Product Type	Kits
Short Description	This ATP1b4 Sandwich ELISA Kit is an in-vitro enzyme-linked immunosorbent assay for the measurement of samples in human tissue homogenates, cell lysates or other biological fluids..
Applications	ELISA
Reactivity	Human

PRODUCT PROPERTIES

Detection	0.312-20ng/mL
Sensitivity	0.106ng/mL
Detection Limit	0.312-20ng/mL
Assay Time	4.5 hrs
Storage	Store the unopened kit in the fridge at 2-8°C for up to 6 months. Once opened store individual kit contents according to components table provided with the kit.
Instruction	STRICTLY FOR FURTHER SCIENTIFIC RESEARCH USE ONLY (RUO). MUST NOT TO BE USED IN DIAGNOSTIC OR THERAPEUTIC APPLICATIONS.

TARGET INFORMATION

Sample Types	tissue homogenates, cell lysates or other biological fluids.
Gene Symbol	ATP1B4
Uniprot ID	AT1B4_HUMAN



This product is suitable for in-vitro studies under the RESEARCH USE ONLY [RUO] licence. This product must not be used as for diagnostic or other medical purposes.
St John's Laboratory Ltd, Knowledge Dock Business Centre, University Way, London, E16 2RD | Tel: 0208 223 3081