

Rat ALB (Albumin) Competitive ELISA Kit (STJE0007043)

STJE0007043

GENERAL INFORMATION

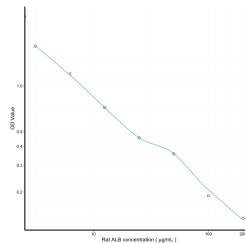
Product Type	Kits
Short Description	This ALB Competitive ELISA Kit is an in-vitro enzyme-linked immunosorbent assay for the measurement of samples in rat serum, plasma or other biological fluids..
Applications	ELISA
Reactivity	Rat

PRODUCT PROPERTIES

Detection	3.12-200 Mu g/mL
Sensitivity	0.93 Mu g/mL
Detection Limit	3.12-200 Mu g/mL
Assay Time	2.5 hrs
Storage Instruction	Store the unopened kit in the fridge at 2-8°C for up to 6 months. Once opened store individual kit contents according to components table provided with the kit.
Note	STRICTLY FOR FURTHER SCIENTIFIC RESEARCH USE ONLY (RUO). MUST NOT TO BE USED IN DIAGNOSTIC OR THERAPEUTIC APPLICATIONS.

TARGET INFORMATION

Sample Types	serum, plasma or other biological fluids.
Gene Symbol	Alb
Uniprot ID	ALBU_RAT



This product is suitable for in-vitro studies under the RESEARCH USE ONLY [RUO] licence. This product must not be used as for diagnostic or other medical purposes.
St John's Laboratory Ltd, Knowledge Dock Business Centre, University Way, London, E16 2RD | Tel: 0208 223 3081