

Mouse SELL (Selectin, Leukocyte) Sandwich ELISA Kit Ready-To-Use Kit (STJE0006918)

STJE0006918

GENERAL INFORMATION

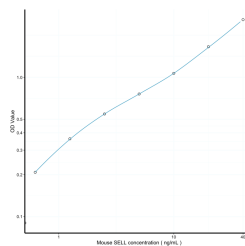
Product	Kits
Type	
Short Description	This SELL Sandwich ELISA Kit, Ready-To-Use is an in-vitro enzyme-linked immunosorbent assay for the measurement of samples in mouse serum, plasma, tissue homogenates or other biological fluids..
Applications	ELISA
Reactivity	Mouse

PRODUCT PROPERTIES

Detection	0.625-40ng/mL
Sensitivity	0.227ng/mL
Detection Limit	0.625-40ng/mL
Assay Time	3 hrs
Storage	Store the unopened kit in the fridge at 2-8°C for up to 6 months. Once opened store individual kit contents according to components table provided with the kit.
Instruction	
Note	STRICTLY FOR FURTHER SCIENTIFIC RESEARCH USE ONLY (RUO). MUST NOT TO BE USED IN DIAGNOSTIC OR THERAPEUTIC APPLICATIONS.

TARGET INFORMATION

Sample	serum, plasma, tissue homogenates or other biological fluids.
Types	
Gene	Sell
Symbol	
Uniprot ID	LYAM1_MOUSE



This product is suitable for in-vitro studies under the RESEARCH USE ONLY [RUO] licence. This product must not be used as for diagnostic or other medical purposes.
St John's Laboratory Ltd, Knowledge Dock Business Centre, University Way, London, E16 2RD | Tel: 0208 223 3081