

## Pg (Progesterone) Competitive ELISA Kit (STJE0006634)

STJE0006634

### GENERAL INFORMATION

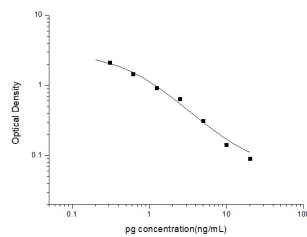
|                     |   |
|---------------------|---|
| <b>Product Type</b> | Kits  |
| <b>Description</b>  | This Pg Competitive ELISA is an in-vitro enzyme-linked immunosorbent assay for the measurement of samples in all serum, plasma, urine and saliva. |
| <b>Applications</b> | ELISA   |
| <b>Reactivity</b>   | All   |

### PRODUCT PROPERTIES

|                        |  |
|------------------------|--|
| <b>Detection</b>       | Colormetric  |
| <b>Sensitivity</b>     | 0.15ng/mL  |
| <b>Detection Limit</b> | 0.31~20ng/mL   |
| <b>Assay Time</b>      | 2.5h   |
| <b>Storage</b>         | If unopened the kit may be stored at 2-8°C for up to 1 month. If the kit will not be used within 1 month, store the components separately, according to the component table in the manual. |
| <b>Note</b>            | FOR SCIENTIFIC EDUCATIONAL RESEARCH USE ONLY (RUO). MUST NOT BE USED IN DIAGNOSTIC OR OTHER MEDICAL APPLICATIONS.  |

### TARGET INFORMATION

|                     |                                 |
|---------------------|---------------------------------|
| <b>Sample Types</b> | Serum, Plasma, Urine and Saliva |
| <b>Gene Symbol</b>  |                                 |
| <b>Uniprot ID</b>   |                                 |



This product is suitable for in-vitro studies under the RESEARCH USE ONLY [RUO] licence. This product must not be used as for diagnostic or other medical purposes.  
St John's Laboratory Ltd, Knowledge Dock Business Centre, University Way, London, E16 2RD | Tel: 0208 223 3081