

## VB6 (Vitamin B6) Competitive ELISA Kit (STJE0006572)

STJE0006572

### GENERAL INFORMATION

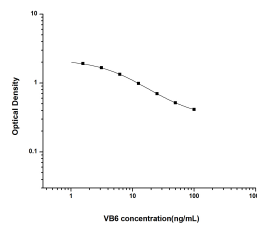
<b>Product Type</b>	Kits
<b>Short Description</b>	This VB6 Competitive ELISA is an in-vitro enzyme-linked immunosorbent assay for the measurement of samples in all serum, plasma and other biological fluids.
<b>Applications</b>	ELISA
<b>Reactivity</b>	All

### PRODUCT PROPERTIES

<b>Detection</b>	Colormetric
<b>Sensitivity</b>	0.94ng/mL
<b>Detection Limit</b>	1.56~100ng/mL
<b>Assay Time</b>	2.5h
<b>Storage</b>	If unopened the kit may be stored at 2-8°C for up to 1 month. If the kit will not be used within 1 month, store the components separately, according to the component table in the manual.
<b>Instruction</b>	
<b>Note</b>	FOR SCIENTIFIC EDUCATIONAL RESEARCH USE ONLY (RUO). MUST NOT BE USED IN DIAGNOSTIC OR OTHER MEDICAL APPLICATIONS.

### TARGET INFORMATION

<b>Sample Types</b>	Serum, plasma and other biological fluids
<b>Gene Symbol</b>	
<b>Uniprot ID</b>	



This product is suitable for in-vitro studies under the RESEARCH USE ONLY [RUO] licence. This product must not be used as for diagnostic or other medical purposes.  
St John's Laboratory Ltd, Knowledge Dock Business Centre, University Way, London, E16 2RD | Tel: 0208 223 3081