

## Rat CGRP1 (Calcitonin Gene Related Peptide1) Sandwich ELISA Kit (STJE0005519)

STJE0005519

### GENERAL INFORMATION

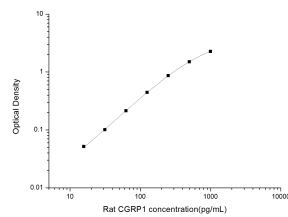
|                     |   |
|---------------------|---|
| <b>Product Type</b> | Kits  |
| <b>Description</b>  | This CGRP1 Sandwich ELISA is an in-vitro enzyme-linked immunosorbent assay for the measurement of samples in rat serum, plasma and other biological fluids. |
| <b>Applications</b> | ELISA   |
| <b>Reactivity</b>   | Rat   |

### PRODUCT PROPERTIES

|                        |  |
|------------------------|--|
| <b>Detection</b>       | Colormetric  |
| <b>Sensitivity</b>     | 9.38pg/mL  |
| <b>Detection Limit</b> | 15.63~1000pg/mL  |
| <b>Assay Time</b>      | 3.5h   |
| <b>Storage</b>         | If unopened the kit may be stored at 2-8°C for up to 1 month. If the kit will not be used within 1 month, store the components separately, according to the component table in the manual. |
| <b>Note</b>            | FOR SCIENTIFIC EDUCATIONAL RESEARCH USE ONLY (RUO). MUST NOT BE USED IN DIAGNOSTIC OR OTHER MEDICAL APPLICATIONS.  |

### TARGET INFORMATION

|                     |   |
|---------------------|---|
| <b>Sample Types</b> | Serum, plasma and other biological fluids |
| <b>Gene Symbol</b>  |   |
| <b>Uniprot ID</b>   |   |



This product is suitable for in-vitro studies under the RESEARCH USE ONLY [RUO] licence. This product must not be used as for diagnostic or other medical purposes.  
St John's Laboratory Ltd, Knowledge Dock Business Centre, University Way, London, E16 2RD | Tel: 0208 223 3081