

Mouse Acta2 (Actin, aortic smooth muscle) Sandwich ELISA Kit (STJE0005198)

STJE0005198

GENERAL INFORMATION

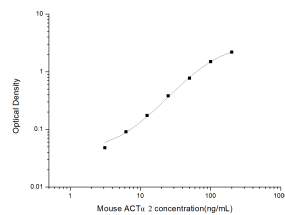
Product Type	Kits
Description	This Acta2 Sandwich ELISA is an in-vitro enzyme-linked immunosorbent assay for the measurement of samples in mouse serum, plasma and other biological fluids.
Applications	ELISA
Reactivity	Mouse

PRODUCT PROPERTIES

Detection	Colormetric
Sensitivity	1.88ng/mL
Detection Limit	3.13~200ng/mL
Assay Time	3.5h
Storage	If unopened the kit may be stored at 2-8°C for up to 1 month. If the kit will not be used within 1 month, store the components separately, according to the component table in the manual.
Note	FOR SCIENTIFIC EDUCATIONAL RESEARCH USE ONLY (RUO). MUST NOT BE USED IN DIAGNOSTIC OR OTHER MEDICAL APPLICATIONS.

TARGET INFORMATION

Sample Types	Serum, plasma and other biological fluids
Gene Symbol	Acta2
Uniprot ID	ACTA_MOUSE



This product is suitable for in-vitro studies under the RESEARCH USE ONLY [RUO] licence. This product must not be used as for diagnostic or other medical purposes.
St John's Laboratory Ltd, Knowledge Dock Business Centre, University Way, London, E16 2RD | Tel: 0208 223 3081