

Human PTX3 (Pentraxin-related protein PTX3) Sandwich ELISA Kit (STJE0004093)

STJE0004093

GENERAL INFORMATION

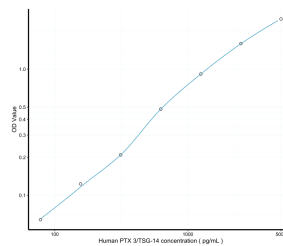
| | |
|--------------------------|--|
| Product Type | Kits |
| Short Description | This PTX3 Sandwich ELISA is an in-vitro enzyme-linked immunosorbent assay for the measurement of samples in human serum, plasma and other biological fluids. |
| Applications | ELISA |
| Reactivity | Human |

PRODUCT PROPERTIES

| | |
|------------------------|--|
| Detection | Colormetric |
| Sensitivity | 4.12pg/mL |
| Detection Limit | 6.86~5000pg/mL |
| Assay Time | 3.5h |
| Storage | If unopened the kit may be stored at 2-8°C for up to 1 month. If the kit will not be used within 1 month, store the components separately, according to the component table in the manual. |
| Instruction | |
| Note | FOR SCIENTIFIC EDUCATIONAL RESEARCH USE ONLY (RUO). MUST NOT BE USED IN DIAGNOSTIC OR OTHER MEDICAL APPLICATIONS. |

TARGET INFORMATION

| | |
|---------------------|---|
| Sample Types | Serum, plasma and other biological fluids |
| Gene Symbol | PTX3 |
| Uniprot ID | PTX3_HUMAN |



This product is suitable for in-vitro studies under the RESEARCH USE ONLY [RUO] licence. This product must not be used as for diagnostic or other medical purposes.
 St John's Laboratory Ltd, Knowledge Dock Business Centre, University Way, London, E16 2RD | Tel: 0208 223 3081