

Human SC5b9 (soluble terminal complement complex) Sandwich ELISA Kit (STJE0003660)

STJE0003660

GENERAL INFORMATION

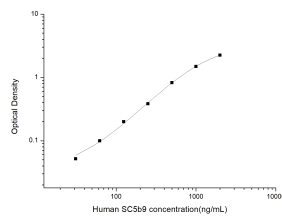
Product Type	Kits
Short Description	This SC5b9 Sandwich ELISA is an in-vitro enzyme-linked immunosorbent assay for the measurement of samples in human serum, plasma and other biological fluids.
Applications	ELISA
Reactivity	Human

PRODUCT PROPERTIES

Detection	Colormetric
Sensitivity	18.75ng/mL
Detection Limit	31.25~2000ng/mL
Assay Time	3.5h
Storage	If unopened the kit may be stored at 2-8°C for up to 1 month. If the kit will not be used within 1 month, store the components separately, according to the component table in the manual.
Instruction	
Note	FOR SCIENTIFIC EDUCATIONAL RESEARCH USE ONLY (RUO). MUST NOT BE USED IN DIAGNOSTIC OR OTHER MEDICAL APPLICATIONS.

TARGET INFORMATION

Sample Types	Serum, plasma and other biological fluids
Gene Symbol	
Uniprot ID	



This product is suitable for in-vitro studies under the RESEARCH USE ONLY [RUO] licence. This product must not be used as for diagnostic or other medical purposes.
 St John's Laboratory Ltd, Knowledge Dock Business Centre, University Way, London, E16 2RD | Tel: 0208 223 3081