

Rat CNTN1 (Contactin 1) CLIA Kit (STJC0001635)

STJC0001635

GENERAL INFORMATION

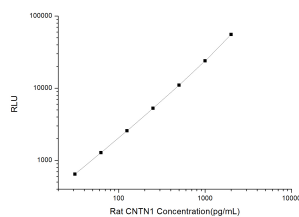
Product Type	Kits
Short Description	This rat CNTN1 kit is a highly sensitive in-vitro chemiluminescent immunoassay for the measurement of trace amounts of analytes in serum, plasma and other biological fluids.
Applications	CLIA
Reactivity	Rat

PRODUCT PROPERTIES

Detection	Chemiluminescence
Sensitivity	18.75pg/mL
Detection Limit	31.25~2000pg/mL
Assay Time	3.5h
Storage	If unopened the kit may be stored at 2-8°C for up to 1 month. If the kit will not be used within 1 month, store the components separately, according to the component table in the manual.
Instruction	
Note	FOR SCIENTIFIC EDUCATIONAL RESEARCH USE ONLY (RUO). MUST NOT BE USED IN DIAGNOSTIC OR OTHER MEDICAL APPLICATIONS.

TARGET INFORMATION

Sample Types	Serum, plasma and other biological fluids
Gene Symbol	Ctnn1
Uniprot ID	CNTN1_RAT



This product is suitable for in-vitro studies under the RESEARCH USE ONLY [RUO] licence. This product must not be used as for diagnostic or other medical purposes.
St John's Laboratory Ltd, Knowledge Dock Business Centre, University Way, London, E16 2RD | Tel: 0208 223 3081