

Rat PRL (Prolactin) CLIA Kit (STJC0001534)

STJC0001534

GENERAL INFORMATION

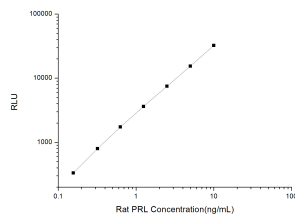
Product Type	Kits
Description	This rat PRL kit is a highly sensitive in-vitro chemiluminescent immunoassay for the measurement of trace amounts of analytes in serum, plasma and other biological fluids.
Applications	CLIA
Reactivity	Rat

PRODUCT PROPERTIES

Detection	Chemiluminescence
Sensitivity	0.09ng/mL
Detection Limit	0.16~10ng/mL
Assay Time	3.5h
Storage	If unopened the kit may be stored at 2-8°C for up to 1 month. If the kit will not be used within 1 month, store the components separately, according to the component table in the manual.
Note	FOR SCIENTIFIC EDUCATIONAL RESEARCH USE ONLY (RUO). MUST NOT BE USED IN DIAGNOSTIC OR OTHER MEDICAL APPLICATIONS.

TARGET INFORMATION

Sample Types	Serum, plasma and other biological fluids
Gene Symbol	Prl
Uniprot ID	PRL_RAT



This product is suitable for in-vitro studies under the RESEARCH USE ONLY [RUO] licence. This product must not be used as for diagnostic or other medical purposes.
 St John's Laboratory Ltd, Knowledge Dock Business Centre, University Way, London, E16 2RD | Tel: 0208 223 3081