

## Human MAP-2 (Microtubule Associated Protein 2) CLIA Kit (STJC0000865)

STJC0000865

### GENERAL INFORMATION

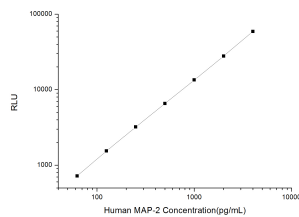
<b>Product Type</b>	Kits
<b>Description</b>	This human MAP-2 kit is a highly sensitive in-vitro chemiluminescent immunoassay for the measurement of trace amounts of analytes in serum, plasma and other biological fluids.
<b>Applications</b>	CLIA
<b>Reactivity</b>	Human

### PRODUCT PROPERTIES

<b>Detection</b>	Chemiluminescence
<b>Sensitivity</b>	37.5pg/mL
<b>Detection Limit</b>	62.5~4000pg/mL
<b>Assay Time</b>	3.5h
<b>Storage</b>	If unopened the kit may be stored at 2-8°C for up to 1 month. If the kit will not be used within 1 month, store the components separately, according to the component table in the manual.
<b>Instruction</b>	
<b>Note</b>	FOR SCIENTIFIC EDUCATIONAL RESEARCH USE ONLY (RUO). MUST NOT BE USED IN DIAGNOSTIC OR OTHER MEDICAL APPLICATIONS.

### TARGET INFORMATION

<b>Sample Types</b>	Serum, plasma and other biological fluids
<b>Gene Symbol</b>	
<b>Uniprot ID</b>	



This product is suitable for in-vitro studies under the RESEARCH USE ONLY [RUO] licence. This product must not be used as for diagnostic or other medical purposes.  
St John's Laboratory Ltd, Knowledge Dock Business Centre, University Way, London, E16 2RD | Tel: 0208 223 3081