

Anti-Recombinant-Cytokeratin 16/K16 antibody [SM8242] (STJA0018242)

STJA0018242

GENERAL INFORMATION

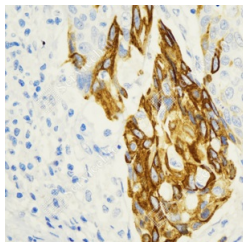
Product Type	Primary antibodies
Short Description	Mouse monoclonal antibody anti-Recombinant-Cytokeratin 16/K16 is suitable for use in Immunohistochemistry and Immunofluorescence research applications.
Applications	IHC/IF
Host/Source	Mouse
Reactivity	Human

PRODUCT PROPERTIES

Clonality	Monoclonal
Clone ID	SM8242
Concentration	
Conjugation	Unconjugated
Purification	Affinity purification
Dilution Range	IHC/IF (H) 1:500-1:1000
Formulation	PBS with 0.15% ProClin300, 100 Mu g/mL BSA and 50% glycerol.
Isotype	IgG1
Storage Instruction	Store at -20C for up to one year, and avoid repeated freeze-thaw cycles.

TARGET INFORMATION

Gene ID	3868
Gene Symbol	KRT16
Uniprot ID	K1C16_HUMAN
Immunogen	KLH conjugated Synthetic peptide corresponding to Human CK16
Immunogen Region	
Specificity	
Immunogen Sequence	



Sample: Human esophageal carcinoma, 4% PFA 12-24h. Antigen retrieval: Citrate buffer, pressure cooker 2min. Primary antibody: 1:1000, 4C overnight. Secondary antibody: HRP conjugated Goat Anti-mouse IgG, 1:200, RT, 1h.

This product is suitable for in-vitro studies under the RESEARCH USE ONLY [RUO] licence. This product must not be used as for diagnostic or other medical purposes.
St John's Laboratory Ltd, Knowledge Dock Business Centre, University Way, London, E16 2RD | Tel: 0208 223 3081