

Anti-SOX2 antibody (1-68 aa) [R74-1A-2] (STJA0016073)

STJA0016073

GENERAL INFORMATION

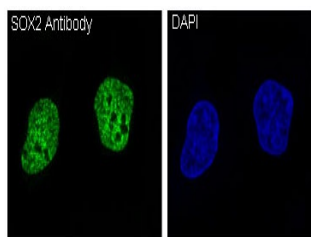
Product Type	Primary antibodies
Short Description	Rabbit monoclonal antibody anti-SOX2 (1-68 aa) is suitable for use in Western Blot, Immunohistochemistry, Immunocytochemistry and Immunofluorescence research applications.
Applications	WB/IHC-P/ICC/IF
Host/Source	Rabbit
Reactivity	Human/Mouse

PRODUCT PROPERTIES

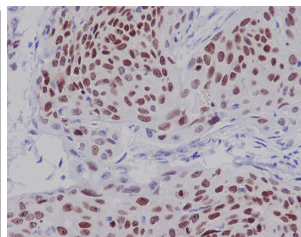
Clonality	Monoclonal
Clone ID	R74-1A-2
Concentration	-
Conjugation	Unconjugated
Purification	Affinity Chromatography
Dilution Range	WB 1:500-1:1000 IHC 1:100-1:200 IF 1:50-1:200
Formulation	Liquid in PBS, pH 7.4, 150mM NaCl, 0.02% sodium azide and 50% glycerol.
Isotype	IgG
Storage Instruction	Store at 4°C short term. Aliquot and store at -20°C long term. Avoid freeze/thaw cycles.

TARGET INFORMATION

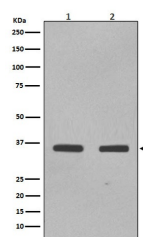
Gene ID	6657
Gene Symbol	SOX2
Uniprot ID	SOX2_HUMAN
Immunogen	A synthesized peptide derived from human SOX2
Immunogen Region	1-68 aa
Specificity	
Immunogen Sequence	



Immunofluorescence analysis of SOX2 in NCCIT cells using SOX2 antibody (green) and DAPI (blue).



Immunohistochemistry analysis of paraffin-embedded human cervix carcinoma using SOX2 antibody. High-pressure and temperature Sodium Citrate pH 6.0 was used for antigen retrieval.



Western blot analysis of SOX2 in (1) NCCIT lysates; (2) F9 lysates using SOX2 antibody.

This product is suitable for in-vitro studies under the RESEARCH USE ONLY [RUO] licence. This product must not be used as for diagnostic or other medical purposes.
St John's Laboratory Ltd, Knowledge Dock Business Centre, University Way, London, E16 2RD | Tel: 0208 223 3081