

## Anti-CDH17 antibody (1-65 aa) [R04-5A8] (STJA0015100)

STJA0015100

### GENERAL INFORMATION

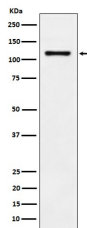
<b>Product Type</b>	Primary antibodies
<b>Short Description</b>	Rabbit monoclonal antibody anti-LI Cadherin (1-65 aa) is suitable for use in Western Blot, Immunohistochemistry and Immunoprecipitation research applications.
<b>Applications</b>	WB/IHC-P/IP
<b>Host/Source</b>	Rabbit
<b>Reactivity</b>	Human

### PRODUCT PROPERTIES

<b>Clonality</b>	Monoclonal
<b>Clone ID</b>	R04-5A8
<b>Concentration</b>	-
<b>Conjugation</b>	Unconjugated
<b>Purification</b>	Affinity Chromatography
<b>Dilution Range</b>	WB 1:500-1:1000 IHC 1:50-1:100 IP 1:50
<b>Formulation</b>	Liquid in PBS pH7.4, 150mM NaCl, 0.02% Sodium Azide and 50% Glycerol.
<b>Isotype</b>	IgG
<b>Storage</b>	Store at 4°C short term. Aliquot and store at -20°C long term. Avoid freeze/thaw cycles.
<b>Instruction</b>	

### TARGET INFORMATION

<b>Gene ID</b>	1015
<b>Gene Symbol</b>	CDH17
<b>Uniprot ID</b>	CAD17_HUMAN
<b>Immunogen</b>	A synthesized peptide derived from human LI-Cadherin
<b>Immunogen Region</b>	1-65 aa
<b>Specificity</b>	
<b>Immunogen Sequence</b>	



Western blot analysis of LI-Cadherin in HT-29 lysates using LI-Cadherin antibody.

This product is suitable for in-vitro studies under the RESEARCH USE ONLY [RUO] licence. This product must not be used as for diagnostic or other medical purposes.  
St John's Laboratory Ltd, Knowledge Dock Business Centre, University Way, London, E16 2RD | Tel: 0208 223 3081