

Anti-ITGA2 antibody (1100-1181 aa) [R09-7C3] (STJA0014704)

STJA0014704

GENERAL INFORMATION

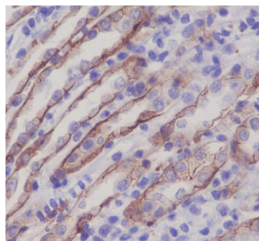
Product Type	Primary antibodies
Short Description	Rabbit monoclonal antibody anti-Integrin alpha 2 (1100-1181 aa) is suitable for use in Western Blot, Immunohistochemistry, Immunocytochemistry, Immunofluorescence, Immunoprecipitation and Flow Cytometry research applications.
Applications	WB/IHC-P/ICC/IF/IP/FC
Host/Source	Rabbit
Reactivity	Human/Mouse/Rat

PRODUCT PROPERTIES

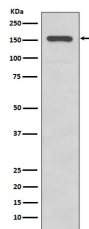
Clonality	Monoclonal
Clone ID	R09-7C3
Concentration	-
Conjugation	Unconjugated
Purification	Affinity Chromatography
Dilution	WB 1:500-1:1000
Range	IHC 1:50-1:100 IF 1:50-1:200 IP 1:100 FC 1:50-1:100
Formulation	Liquid in PBS pH7.4, 150mM NaCl, 0.02% Sodium Azide and 50% Glycerol.
Isotype	IgG
Storage	Store at 4°C short term. Aliquot and store at -20°C long term. Avoid freeze/thaw cycles.
Instruction	

TARGET INFORMATION

Gene ID	3673
Gene Symbol	ITGA2
Uniprot ID	ITA2_HUMAN
Immunogen	A synthesized peptide derived from human Integrin alpha 2
Immunogen Region	1100-1181 aa
Specificity	
Immunogen Sequence	



Immunohistochemistry analysis of paraffin-embedded mouse kidney using Integrin alpha 2 antibody. High-pressure and temperature Sodium Citrate pH 6.0 was used for antigen retrieval.



Western blot analysis of Integrin alpha 2 in A431 lysates using Integrin alpha 2 antibody.

This product is suitable for in-vitro studies under the RESEARCH USE ONLY [RUO] licence. This product must not be used as for diagnostic or other medical purposes.
St John's Laboratory Ltd, Knowledge Dock Business Centre, University Way, London, E16 2RD | Tel: 0208 223 3081