

Anti-TSC2 antibody (1750-1807 aa) [R06-4E9] (STJA0014655)

STJA0014655

GENERAL INFORMATION

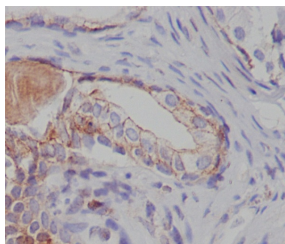
| | |
|--------------------------|--|
| Product Type | Primary antibodies |
| Short Description | Rabbit monoclonal antibody anti-Tuberin (1750-1807 aa) is suitable for use in Western Blot, Immunohistochemistry and Flow Cytometry research applications. |
| Applications | WB/IHC-P/FC |
| Host/Source | Rabbit |
| Reactivity | Human/Mouse/Rat |

PRODUCT PROPERTIES

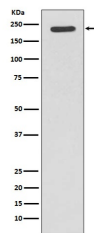
| | |
|-----------------------|--|
| Clonality | Monoclonal |
| Clone ID | R06-4E9 |
| Concentration | - |
| Conjugation | Unconjugated |
| Purification | Affinity Chromatography |
| Dilution Range | WB 1:500-1:1000 IHC 1:50-1:100 FC 1:50-1:100 |
| Formulation | Liquid in PBS pH7.4, 150mM NaCl, 0.02% Sodium Azide and 50% Glycerol. |
| Isotype | IgG |
| Storage | Store at 4°C short term. Aliquot and store at -20°C long term. Avoid freeze/thaw cycles. |
| Instruction | |

TARGET INFORMATION

| | |
|---------------------------|--|
| Gene ID | 7249 |
| Gene Symbol | TSC2 |
| Uniprot ID | TSC2_HUMAN |
| Immunogen | A synthesized peptide derived from human Tuberin |
| Immunogen Region | 1750-1807 aa |
| Specificity | |
| Immunogen Sequence | |



Immunohistochemistry analysis of paraffin-embedded Human prostate carcinoma using Tuberin antibody. High-pressure and temperature Sodium Citrate pH 6.0 was used for antigen retrieval.



Western blot analysis of Tuberin in Jurkat lysates using Tuberin antibody.