

Anti-ITGA6 antibody (25-53 aa) [R01-6B2] (STJA0014641)

STJA0014641

GENERAL INFORMATION

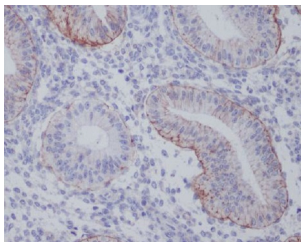
Product Type	Primary antibodies
Short Description	Rabbit monoclonal antibody anti-Integrin alpha 6 (25-53 aa) is suitable for use in Western Blot and Immunohistochemistry research applications.
Applications	WB/IHC-P
Host/Source	Rabbit
Reactivity	Human/Mouse/Rat

PRODUCT PROPERTIES

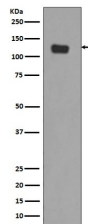
Clonality	Monoclonal
Clone ID	R01-6B2
Concentration	-
Conjugation	Unconjugated
Purification	Affinity Chromatography
Dilution Range	WB 1:500-1:1000 IHC 1:50-1:100
Formulation	Liquid in PBS pH7.4, 150mM NaCl, 0.02% Sodium Azide and 50% Glycerol.
Isotype	IgG
Storage Instruction	Store at 4°C short term. Aliquot and store at -20°C long term. Avoid freeze/thaw cycles.

TARGET INFORMATION

Gene ID	3655
Gene Symbol	ITGA6
Uniprot ID	ITA6_HUMAN
Immunogen	A synthesized peptide derived from human Integrin alpha 6
Immunogen	25-53 aa
Region	
Specificity	
Immunogen	
Sequence	



Immunohistochemistry analysis of paraffin-embedded Human uterus using Integrin alpha 6 antibody. High-pressure and temperature Sodium Citrate pH 6.0 was used for antigen retrieval.



Western blot analysis of Integrin alpha 6 in SW480 lysates using Integrin alpha 6 antibody.

This product is suitable for in-vitro studies under the RESEARCH USE ONLY [RUO] licence. This product must not be used as for diagnostic or other medical purposes.
St John's Laboratory Ltd, Knowledge Dock Business Centre, University Way, London, E16 2RD | Tel: 0208 223 3081