

Anti-FOLH1 antibody (1-134 aa) [R04-6I6] (STJA0014600)

STJA0014600

GENERAL INFORMATION

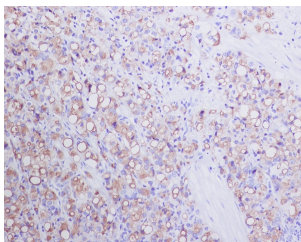
| | |
|--------------------------|--|
| Product Type | Primary antibodies |
| Short Description | Rabbit monoclonal antibody anti-PSMA (1-134 aa) is suitable for use in Western Blot, Immunohistochemistry and Immunoprecipitation research applications. |
| Applications | WB/IHC-P/IP |
| Host/Source | Rabbit |
| Reactivity | Human |

PRODUCT PROPERTIES

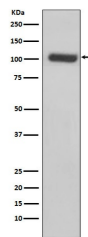
| | |
|-----------------------|--|
| Clonality | Monoclonal |
| Clone ID | R04-6I6 |
| Concentration | - |
| Conjugation | Unconjugated |
| Purification | Affinity Chromatography |
| Dilution Range | WB 1:500-1:1000 IHC 1:50-1:100 IP 1:50 |
| Formulation | Liquid in PBS pH7.4, 150mM NaCl, 0.02% Sodium Azide and 50% Glycerol. |
| Isotype | IgG |
| Storage | Store at 4°C short term. Aliquot and store at -20°C long term. Avoid freeze/thaw cycles. |
| Instruction | |

TARGET INFORMATION

| | |
|---------------------------|---|
| Gene ID | 2346 |
| Gene Symbol | FOLH1 |
| Uniprot ID | FOLH1_HUMAN |
| Immunogen | A synthesized peptide derived from human PSMA |
| Immunogen Region | 1-134 aa |
| Specificity | |
| Immunogen Sequence | |



Immunohistochemistry analysis of paraffin-embedded Human prostate carcinoma using PSMA antibody. High-pressure and temperature Sodium Citrate pH 6.0 was used for antigen retrieval.



Western blot analysis of PSMA in LnCaP lysates using PSMA antibody.