

Anti-ERG antibody (400-479 aa) [R09-9J7] (STJA0014548)

STJA0014548

GENERAL INFORMATION

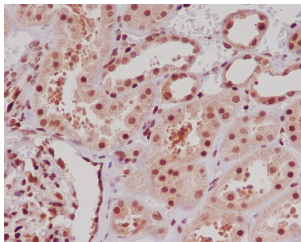
Product Type	Primary antibodies
Short Description	Rabbit monoclonal antibody anti-ERG (400-479 aa) is suitable for use in Western Blot, Immunohistochemistry, Immunocytochemistry, Immunofluorescence and ChIP research applications.
Applications	WB/IHC-P/ICC/IF/ChIP
Host/Source	Rabbit
Reactivity	Human/Mouse/Rat

PRODUCT PROPERTIES

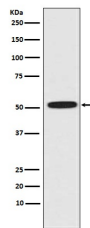
Clonality	Monoclonal
Clone ID	R09-9J7
Concentration	-
Conjugation	Unconjugated
Purification	Affinity Chromatography
Dilution	WB 1:500-1:1000
Range	IHC 1:50-1:100 IF 1:50-1:200 ChIP 1:20
Formulation	Liquid in PBS pH7.4, 150mM NaCl, 0.02% Sodium Azide and 50% Glycerol.
Isotype	IgG
Storage Instruction	Store at 4°C short term. Aliquot and store at -20°C long term. Avoid freeze/thaw cycles.

TARGET INFORMATION

Gene ID	2078
Gene Symbol	ERG
Uniprot ID	ERG_HUMAN
Immunogen	A synthesized peptide derived from human ERG
Immunogen Region	400-479 aa
Specificity	
Immunogen Sequence	



Immunohistochemistry analysis of paraffin-embedded Human kidney using ERG antibody. High-pressure and temperature Sodium Citrate pH 6.0 was used for antigen retrieval.



Western blot analysis of ERG in HeLa lysates using ERG antibody.

This product is suitable for in-vitro studies under the RESEARCH USE ONLY [RUO] licence. This product must not be used as for diagnostic or other medical purposes.
St John's Laboratory Ltd, Knowledge Dock Business Centre, University Way, London, E16 2RD | Tel: 0208 223 3081