

Anti-PLIN1 antibody (475-500 aa) [R08-9B4] (STJA0014403)

STJA0014403

GENERAL INFORMATION

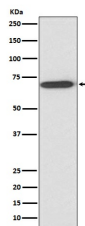
Product Type	Primary antibodies
Short Description	Rabbit monoclonal antibody anti-Perilipin 1 (475-500 aa) is suitable for use in Western Blot, Immunocytochemistry and Immunofluorescence research applications.
Applications	WB/ICC/IF
Host/Source	Rabbit
Reactivity	Human/Mouse

PRODUCT PROPERTIES

Clonality	Monoclonal
Clone ID	R08-9B4
Concentration	-
Conjugation	Unconjugated
Purification	Affinity Chromatography
Dilution Range	WB 1:500-1:1000 IF 1:50-1:200
Formulation	Liquid in PBS pH7.4, 150mM NaCl, 0.02% Sodium Azide and 50% Glycerol.
Isotype	IgG
Storage	Store at 4°C short term. Aliquot and store at -20°C long term. Avoid freeze/thaw cycles.
Instruction	

TARGET INFORMATION

Gene ID	5346
Gene Symbol	PLIN1
Uniprot ID	PLIN1_HUMAN
Immunogen	A synthesized peptide derived from human Perilipin A
Immunogen Region	475-500 aa
Specificity	
Immunogen Sequence	



Western blot analysis of Perilipin A in Human fetal liver lysates using Perilipin 1 antibody.

This product is suitable for in-vitro studies under the RESEARCH USE ONLY [RUO] licence. This product must not be used as for diagnostic or other medical purposes.
St John's Laboratory Ltd, Knowledge Dock Business Centre, University Way, London, E16 2RD | Tel: 0208 223 3081