

Anti-EGFR antibody (900-1210 aa) [1B10] (STJA0013541)

STJA0013541

GENERAL INFORMATION

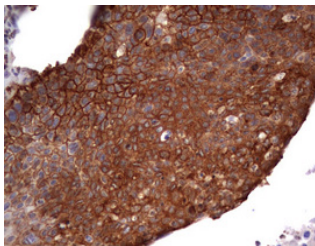
Product Type	Primary antibodies
Short Description	Mouse monoclonal antibody anti-EGFR (900-1210 aa) is suitable for use in Western Blot and Immunohistochemistry research applications.
Applications	WB/IHC-P
Host/Source	Mouse
Reactivity	Human/Mouse/Rat

PRODUCT PROPERTIES

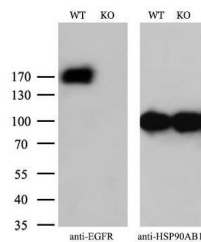
Clonality	Monoclonal
Clone ID	1B10
Concentration	1 mg/ml
Conjugation	Unconjugated
Purification	Affinity Purified
Dilution Range	WB 1:500-1:1000 IHC 1:50-1:100
Formulation	Liquid in PBS containing 50% glycerol, 1% BSA and 0.02% sodium azide, pH 7.3.
Isotype	IgG1
Storage Instruction	Store at 4°C short term. Aliquot and store at -20°C long term. Avoid freeze/thaw cycles.

TARGET INFORMATION

Gene ID	1956
Gene Symbol	EGFR
Uniprot ID	EGFR_HUMAN
Immunogen	Purified recombinant human EGFR protein fragments expressed in E.coli.
Immunogen Region	900-1210 aa
Specificity	
Immunogen Sequence	



Immunohistochemistry analysis of paraffin-embedded Carcinoma of Human lung tissue using EGFR antibody. High-pressure and temperature Sodium Citrate pH 6.0 was used for antigen retrieval.



Western blot analysis of EGFR in HeLa (WT) and EGFR-Knockout HeLa (KO) using EGFR antibody.

This product is suitable for in-vitro studies under the RESEARCH USE ONLY [RUO] licence. This product must not be used as for diagnostic or other medical purposes.
St John's Laboratory Ltd, Knowledge Dock Business Centre, University Way, London, E16 2RD | Tel: 0208 223 3081