

Anti-SNAP25 antibody (193-206 aa) [R07-1D7] (STJA0013092)

STJA0013092

GENERAL INFORMATION

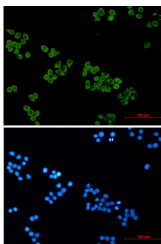
Product Type	Primary antibodies
Short Description	Rabbit monoclonal antibody anti-SNAP25 (193-206 aa) is suitable for use in Western Blot, Immunocytochemistry, Immunofluorescence and Immunoprecipitation research applications.
Applications	WB/ICC/IF/IP
Host/Source	Rabbit
Reactivity	Human/Mouse/Rat

PRODUCT PROPERTIES

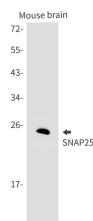
Clonality	Monoclonal
Clone ID	R07-1D7
Concentration	0.3 mg/ml
Conjugation	Unconjugated
Purification	Affinity Purified
Dilution Range	WB 1:500-1:1000 IF 1:50-1:200 IP 1:20
Formulation	50mM Tris-Glycine (pH7.4) , 0.15M NaCl, 40% Glycerol, 0.01% Sodium azide and 0.05% BSA
Isotype	IgG
Storage Instruction	Store at 4°C short term. Aliquot and store at -20°C long term. Avoid freeze/thaw cycles.

TARGET INFORMATION

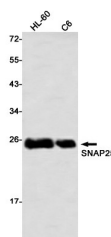
Gene ID	6616
Gene Symbol	SNAP25
Uniprot ID	SNP25_HUMAN
Immunogen	A synthetic peptide of human SNAP25
Immunogen Region	193-206 aa
Specificity	
Immunogen Sequence	



Immunocytochemistry analysis of SNAP25 (green) in HeLa using SNAP25 antibody, and DAPI (blue).



Western blot analysis of SNAP25 in mouse brain lysates using SNAP25 antibody.



Western blot analysis of SNAP25 in HL-60, C6 lysates using SNAP25 antibody.

This product is suitable for in-vitro studies under the RESEARCH USE ONLY [RUO] licence. This product must not be used as for diagnostic or other medical purposes.
St John's Laboratory Ltd, Knowledge Dock Business Centre, University Way, London, E16 2RD | Tel: 0208 223 3081