

Anti-SMAD2 antibody (81-100 aa) [R03-3F8] (STJA0013074)

STJA0013074

GENERAL INFORMATION

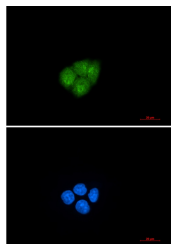
Product Type	Primary antibodies
Short Description	Rabbit monoclonal antibody anti-Smad2 (81-100 aa) is suitable for use in Western Blot, Immunohistochemistry, Immunocytochemistry, Immunofluorescence and Immunoprecipitation research applications.
Applications	WB/IHC-F/IHC-P/ICC/IF/IP
Host/Source	Rabbit
Reactivity	Human/Rat/Hamster

PRODUCT PROPERTIES

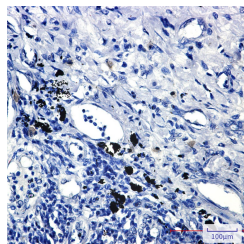
Clonality	Monoclonal
Clone ID	R03-3F8
Concentration	0.3 mg/ml
Conjugation	Unconjugated
Purification	Affinity Purified
Dilution	WB 1:500-1:1000
Range	IHC 1:50-1:100 IF 1:50-1:200 IP 1:20
Formulation	50mM Tris-Glycine (pH7.4) , 0.15M NaCl, 40% Glycerol, 0.01% Sodium azide and 0.05% BSA
Isotype	IgG
Storage Instruction	Store at 4°C short term. Aliquot and store at -20°C long term. Avoid freeze/thaw cycles.

TARGET INFORMATION

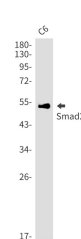
Gene ID	4087
Gene Symbol	SMAD2
Uniprot ID	SMAD2_HUMAN
Immunogen	A synthetic peptide of human Smad2
Immunogen Region	81-100 aa
Specificity	
Immunogen Sequence	



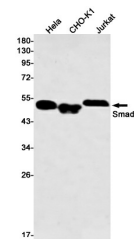
Immunocytochemistry analysis of Smad2 (green) in HeLa using Smad2 antibody, and DAPI (blue).



Immunohistochemistry analysis of paraffin-embedded Human lung cancer using Smad2 antibody. High-pressure and temperature Sodium Citrate pH 6.0 was used for antigen retrieval.



Western blot analysis of Smad2 in C6 lysates using Smad2 antibody.



Western blot analysis of Smad2 in HeLa, CHO-K1, Jurkat lysates using Smad2 antibody