

## Anti-EGFR antibody (1075-1093 aa) [R03-6B1] (STJA0013018)

STJA0013018

### GENERAL INFORMATION

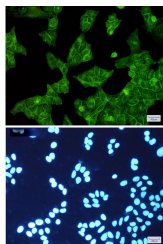
<b>Product Type</b>	Primary antibodies
<b>Short Description</b>	Rabbit monoclonal antibody anti-EGFR (1075-1093 aa) is suitable for use in Western Blot, Immunocytochemistry, Immunofluorescence and Immunoprecipitation research applications.
<b>Applications</b>	WB/ICC/IF/IP
<b>Host/Source</b>	Rabbit
<b>Reactivity</b>	Human/Mouse

### PRODUCT PROPERTIES

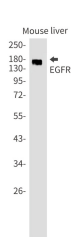
<b>Clonality</b>	Monoclonal
<b>Clone ID</b>	R03-6B1
<b>Concentration</b>	0.3 mg/ml
<b>Conjugation</b>	Unconjugated
<b>Purification</b>	Affinity Purified
<b>Dilution Range</b>	WB 1:500-1:1000 IF 1:50-1:200 IP 1:20
<b>Formulation</b>	50mM Tris-Glycine (pH7.4) , 0.15M NaCl, 40% Glycerol, 0.01% Sodium azide and 0.05% BSA
<b>Isotype</b>	IgG
<b>Storage Instruction</b>	Store at 4°C short term. Aliquot and store at -20°C long term. Avoid freeze/thaw cycles.

### TARGET INFORMATION

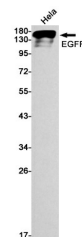
<b>Gene ID</b>	1956
<b>Gene Symbol</b>	EGFR
<b>Uniprot ID</b>	EGFR_HUMAN
<b>Immunogen</b>	A synthetic peptide of human EGFR
<b>Immunogen Region</b>	1075-1093 aa
<b>Specificity</b>	
<b>Immunogen Sequence</b>	



Immunocytochemistry analysis of EGFR (green) in HeLa using EGFR antibody, and DAPI (blue)



Western blot analysis of EGFR in mouse liver lysates using EGFR antibody.



Western blot analysis of EGFR in HeLa lysates using EGFR antibody.

This product is suitable for in-vitro studies under the RESEARCH USE ONLY [RUO] licence. This product must not be used as for diagnostic or other medical purposes.  
St John's Laboratory Ltd, Knowledge Dock Business Centre, University Way, London, E16 2RD | Tel: 0208 223 3081