

Anti-CKMT1A/CKMT1B antibody (27-224 aa) [1A6-C7-G10] (STJA0012790)

STJA0012790

GENERAL INFORMATION

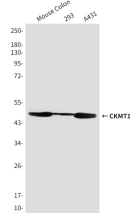
Product Type	Primary antibodies
Short Description	Mouse monoclonal antibody anti-CKMT1 (27-224 aa) is suitable for use in Western Blot research applications.
Applications	WB
Host/Source	Mouse
Reactivity	Human/Mouse

PRODUCT PROPERTIES

Clonality	Monoclonal
Clone ID	1A6-C7-G10
Concentration	4.42 mg/ml
Conjugation	Unconjugated
Purification	Affinity Purified
Dilution Range	WB 1:500-1:1000
Formulation	Liquid in PBS containing 50% glycerol, 0.5% BSA and 0.02% sodium azide, pH 7.3.
Isotype	IgG1
Storage Instruction	Store at 4°C short term. Aliquot and store at -20°C long term. Avoid freeze/thaw cycles.

TARGET INFORMATION

Gene ID	1159/548596
Gene Symbol	CKMT1A,CKMT1B
Uniprot ID	KCRU_HUMAN
Immunogen	Purified recombinant human CKMT1 protein fragments expressed in E.coli.
Immunogen Region	27-224 aa
Specificity	
Immunogen Sequence	



Western blot analysis of CKMT1 in mouse Colon, 293 and A431 lysates using CKMT1 antibody.

This product is suitable for in-vitro studies under the RESEARCH USE ONLY [RUO] licence. This product must not be used as for diagnostic or other medical purposes.
St John's Laboratory Ltd, Knowledge Dock Business Centre, University Way, London, E16 2RD | Tel: 0208 223 3081