

## Anti-SRSF3 antibody (52-65 aa) [R01-6G2] (STJA0012690)

STJA0012690

### GENERAL INFORMATION

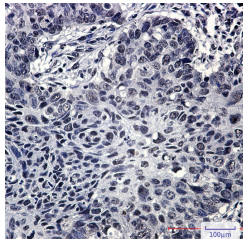
<b>Product Type</b>	Primary antibodies
<b>Short Description</b>	Rabbit monoclonal antibody anti-SRSF3 (52-65 aa) is suitable for use in Western Blot and Immunohistochemistry research applications.
<b>Applications</b>	WB/IHC-P
<b>Host/Source</b>	Rabbit
<b>Reactivity</b>	Human/Mouse/Rat

### PRODUCT PROPERTIES

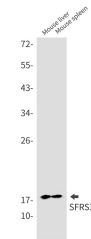
<b>Clonality</b>	Monoclonal
<b>Clone ID</b>	R01-6G2
<b>Concentration</b>	0.3 mg/ml
<b>Conjugation</b>	Unconjugated
<b>Purification</b>	Affinity Purified
<b>Dilution Range</b>	WB 1:500-1:1000 IHC 1:50-1:100
<b>Formulation</b>	50mM Tris-Glycine (pH7.4) , 0.15M NaCl, 40% Glycerol, 0.01% Sodium azide and 0.05% BSA
<b>Isotype</b>	IgG
<b>Storage Instruction</b>	Store at 4°C short term. Aliquot and store at -20°C long term. Avoid freeze/thaw cycles.

### TARGET INFORMATION

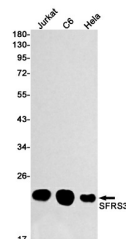
<b>Gene ID</b>	6428
<b>Gene Symbol</b>	SRSF3
<b>Uniprot ID</b>	SRSF3_HUMAN
<b>Immunogen</b>	A synthetic peptide of human SFRS3
<b>Immunogen Region</b>	52-65 aa
<b>Specificity</b>	
<b>Immunogen Sequence</b>	



Immunohistochemistry analysis of paraffin-embedded Human lung cancer using SFRS3 antibody. High-pressure and temperature Sodium Citrate pH 6.0 was used for antigen retrieval.



Western blot analysis of SFRS3 in mouse liver, mouse spleen lysates using SFRS3 antibody.



Western blot analysis of SFRS3 in Jurkat, C6, HeLa lysates using SFRS3 antibody.

This product is suitable for in-vitro studies under the RESEARCH USE ONLY [RUO] licence. This product must not be used as for diagnostic or other medical purposes.  
St John's Laboratory Ltd, Knowledge Dock Business Centre, University Way, London, E16 2RD | Tel: 0208 223 3081