

Anti-PLAA antibody (15-35 aa) [R06-1D7] (STJA0012681)

STJA0012681

GENERAL INFORMATION

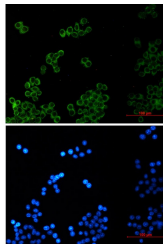
Product Type	Primary antibodies
Short Description	Rabbit monoclonal antibody anti-Phospholipase A2 Activator Protein (15-35 aa) is suitable for use in Western Blot, Immunocytochemistry and Immunofluorescence research applications.
Applications	WB/ICC/IF
Host/Source	Rabbit
Reactivity	Human/Mouse

PRODUCT PROPERTIES

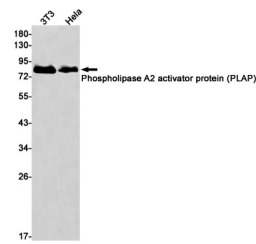
Clonality	Monoclonal
Clone ID	R06-1D7
Concentration	0.3 mg/ml
Conjugation	Unconjugated
Purification	Affinity Purified
Dilution Range	WB 1:500-1:1000 IF 1:50-1:200
Formulation	50mM Tris-Glycine (pH7.4) , 0.15M NaCl, 40% Glycerol, 0.01% Sodium azide and 0.05% BSA
Isotype	IgG
Storage	Store at 4°C short term. Aliquot and store at -20°C long term. Avoid freeze/thaw cycles.
Instruction	

TARGET INFORMATION

Gene ID	9373
Gene Symbol	PLAA
Uniprot ID	PLAP_HUMAN
Immunogen	A synthetic peptide of human Anti-Phospholipase A2 activator protein (PLAP)
Immunogen Region	15-35 aa
Specificity	
Immunogen Sequence	



Immunocytochemistry analysis of Phospho-lipase A2 Activator Protein (green) in HeLa using Phospho-lipase A2 Activator Protein antibody, and DAPI (blue).



Western blot analysis of Phospho-lipase A2 activator protein (PLAP) in 3T3, HeLa lysates using Phospho-lipase A2 activator protein (PLAP) antibody.

This product is suitable for in-vitro studies under the RESEARCH USE ONLY [RUO] licence. This product must not be used as for diagnostic or other medical purposes.
St John's Laboratory Ltd, Knowledge Dock Business Centre, University Way, London, E16 2RD | Tel: 0208 223 3081