

Anti-PRKCB antibody (170-350 aa) [R06-0C2] (STJA0012652)

STJA0012652

GENERAL INFORMATION

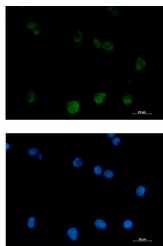
Product Type	Primary antibodies
Short Description	Rabbit monoclonal antibody anti-PKC beta 2 (170-350 aa) is suitable for use in Western Blot, Immunohistochemistry, Immunocytochemistry, Immunofluorescence and Immunoprecipitation research applications.
Applications	WB/IHC-F/IHC-P/ICC/IF/IP
Host/Source	Rabbit
Reactivity	Human/Rat

PRODUCT PROPERTIES

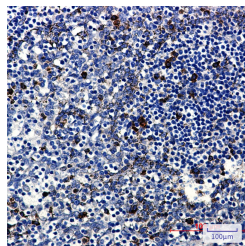
Clonality	Monoclonal
Clone ID	R06-0C2
Concentration	0.3 mg/ml
Conjugation	Unconjugated
Purification	Affinity Purified
Dilution	WB 1:500-1:1000
Range	IHC 1:50-1:100 IF 1:50-1:200 IP 1:20
Formulation	50mM Tris-Glycine (pH7.4) , 0.15M NaCl, 40% Glycerol, 0.01% Sodium azide and 0.05% BSA
Isotype	IgG
Storage Instruction	Store at 4°C short term. Aliquot and store at -20°C long term. Avoid freeze/thaw cycles.

TARGET INFORMATION

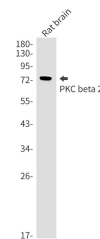
Gene ID	5579
Gene Symbol	PRKCB
Uniprot ID	KPCB_HUMAN
Immunogen	A synthesized peptide derived from human PKC beta 2
Immunogen Region	170-350 aa
Specificity	
Immunogen Sequence	



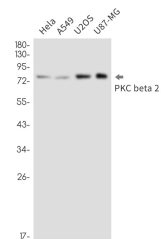
Immunocytochemistry analysis of PKC beta 2 (green) in K562 using PKC beta 2 antibody, and DAPI (blue).



Immunohistochemistry analysis of paraffin-embedded Human tonsil using PKC beta 2 antibody. High-pressure and temperature Sodium Citrate pH 6.0 was used for antigen retrieval.



Western blot analysis of PKC beta 2 in rat brain lysates using PKC beta 2 antibody. Observed band size: 77kDa.



Western blot analysis of PKC beta 2 in HeLa, A549, U2OS, U87-MG lysates using PKC beta 2 antibody