

Anti-TPX2 antibody (Full-length) [R01-8A6] (STJA0012625)

STJA0012625

GENERAL INFORMATION

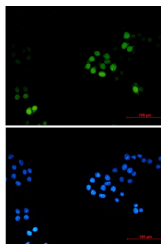
Product Type	Primary antibodies
Short Description	Rabbit monoclonal antibody anti-TPX2 (Full-length) is suitable for use in Western Blot, Immunohistochemistry, Immunocytochemistry, Immunofluorescence and Immunoprecipitation research applications.
Applications	WB/IHC-F/IHC-P/ICC/IF/IP
Host/Source	Rabbit
Reactivity	Human

PRODUCT PROPERTIES

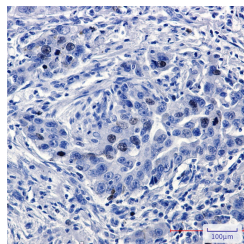
Clonality	Monoclonal
Clone ID	R01-8A6
Concentration	0.3 mg/ml
Conjugation	Unconjugated
Purification	Affinity Purified
Dilution	WB 1:500-1:1000
Range	IHC 1:50-1:100 IF 1:50-1:200 IP 1:20
Formulation	50mM Tris-Glycine (pH7.4) , 0.15M NaCl, 40% Glycerol, 0.01% Sodium azide and 0.05% BSA
Isotype	IgG
Storage	Store at 4°C short term. Aliquot and store at -20°C long term. Avoid freeze/thaw cycles.
Instruction	

TARGET INFORMATION

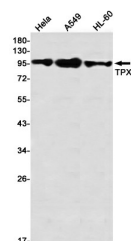
Gene ID	22974
Gene Symbol	TPX2
Uniprot ID	TPX2_HUMAN
Immunogen	A synthetic peptide of human TPX2
Immunogen Region	Full-length
Specificity	
Immunogen Sequence	



Immunocytochemistry analysis of TPX2 (green) in HeLa using TPX2 antibody, and DAPI (blue)



Immunohistochemistry analysis of paraffin-embedded Human lung cancer using TPX2 antibody. High-pressure and temperature Sodium Citrate pH 6.0 was used for antigen retrieval.



Western blot analysis of TPX2 in HeLa, A549, HL-60 lysates using TPX2 antibody.