

Anti-TBP antibody (411-426 aa) [R04-6D1] (STJA0012610)

STJA0012610

GENERAL INFORMATION

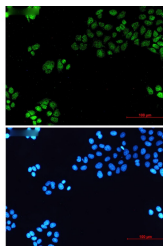
Product Type	Primary antibodies
Short Description	Rabbit monoclonal antibody anti-TATA Box Binding Protein (411-426 aa) is suitable for use in Western Blot, Immunohistochemistry, Immunocytochemistry, Immunofluorescence and Immunoprecipitation research applications.
Applications	WB/IHC-F/IHC-P/ICC/IF/IP
Host/Source	Rabbit
Reactivity	Human/Mouse

PRODUCT PROPERTIES

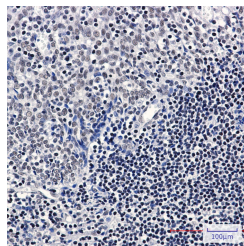
Clonality	Monoclonal
Clone ID	R04-6D1
Concentration	0.3 mg/ml
Conjugation	Unconjugated
Purification	Affinity Purified
Dilution	WB 1:500-1:1000
Range	IHC 1:50-1:100 IF 1:50-1:200 IP 1:20
Formulation	50mM Tris-Glycine (pH7.4) , 0.15M NaCl, 40% Glycerol, 0.01% Sodium azide and 0.05% BSA
Isotype	IgG
Storage Instruction	Store at 4°C short term. Aliquot and store at -20°C long term. Avoid freeze/thaw cycles.

TARGET INFORMATION

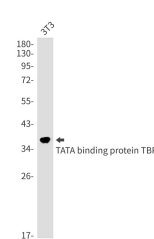
Gene ID	6908
Gene Symbol	TBP
Uniprot ID	TBP_HUMAN
Immunogen	A synthetic peptide of human TATA binding protein TBP
Immunogen Region	411-426 aa
Specificity	
Immunogen Sequence	



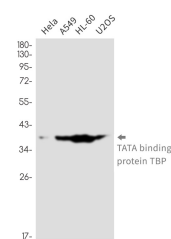
Immunocytochemistry analysis of TATA binding protein TBP (green) in hela using TATA binding protein TBP antibody, and DAPI (blue).



Immunohistochemistry analysis of paraffin-embedded Human tonsil using TATA binding protein TBP antibody. High-pressure and temperature Sodium Citrate pH 6. 0 was used for antigen retrieval.



Western blot analysis of TATA binding protein TBP in 3T3 lysates using TATA Box Binding Protein antibody.



Western blot analysis of TATA binding protein TBP in HeLa, A549, HL-60, U2OS lysates using TATA binding protein TBP antibody.