

Anti-UBE2D1 antibody (119-132 aa) [R07-4E8] (STJA0012589)

STJA0012589

GENERAL INFORMATION

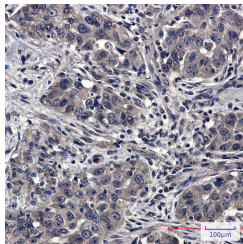
Product Type	Primary antibodies
Short Description	Rabbit monoclonal antibody anti-SFT (119-132 aa) is suitable for use in Western Blot, Immunohistochemistry and Immunoprecipitation research applications.
Applications	WB/IHC-P/IP
Host/Source	Rabbit
Reactivity	Human/Mouse

PRODUCT PROPERTIES

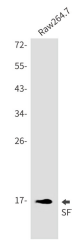
Clonality	Monoclonal
Clone ID	R07-4E8
Concentration	0.3 mg/ml
Conjugation	Unconjugated
Purification	Affinity Purified
Dilution Range	WB 1:500-1:1000 IHC 1:50-1:100 IP 1:20
Formulation	50mM Tris-Glycine (pH7.4) , 0.15M NaCl, 40% Glycerol, 0.01% Sodium azide and 0.05% BSA
Isotype	IgG
Storage	Store at 4°C short term. Aliquot and store at -20°C long term. Avoid freeze/thaw cycles.
Instruction	

TARGET INFORMATION

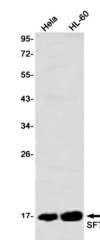
Gene ID	7321
Gene Symbol	UBE2D1
Uniprot ID	UB2D1_HUMAN
Immunogen	A synthetic peptide of human SFT
Immunogen Region	119-132 aa
Specificity	
Immunogen Sequence	



Immunohistochemistry analysis of paraffin-embedded Human lung cancer using SFT antibody. High-pressure and temperature Sodium Citrate pH 6.0 was used for antigen retrieval.



Western blot analysis of SFT in Raw264.7 lysates using SFT antibody.



Western blot analysis of SFT in HeLa, HL-60 lysates using SFT antibody.