

Anti-RPS20 antibody (56-70 aa) [R08-2A0] (STJA0012577)

STJA0012577

GENERAL INFORMATION

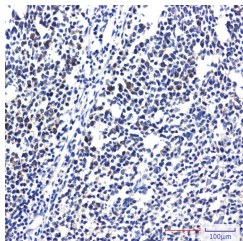
Product Type	Primary antibodies
Short Description	Rabbit monoclonal antibody anti-RPS20 (56-70 aa) is suitable for use in Western Blot and Immunohistochemistry research applications.
Applications	WB/IHC-P
Host/Source	Rabbit
Reactivity	Human/Mouse/Rat/Hamster

PRODUCT PROPERTIES

Clonality	Monoclonal
Clone ID	R08-2A0
Concentration	0.3 mg/ml
Conjugation	Unconjugated
Purification	Affinity Purified
Dilution Range	WB 1:500-1:1000 IHC 1:50-1:100
Formulation	50mM Tris-Glycine (pH7.4) , 0.15M NaCl, 40% Glycerol, 0.01% Sodium azide and 0.05% BSA
Isotype	IgG
Storage Instruction	Store at 4°C short term. Aliquot and store at -20°C long term. Avoid freeze/thaw cycles.

TARGET INFORMATION

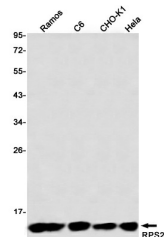
Gene ID	6224
Gene Symbol	RPS20
Uniprot ID	RS20_HUMAN
Immunogen	A synthetic peptide of human RPS20
Immunogen Region	56-70 aa
Specificity	
Immunogen Sequence	



Immunohistochemistry analysis of paraffin-embedded Human tonsil using RPS20 antibody. High-pressure and temperature Sodium Citrate pH 6.0 was used for antigen retrieval.



Western blot analysis of RPS20 in 3T3, Raw264.7, PC-12, C6 lysates using RPS20 antibody.



Western blot analysis of RPS20 in HeLa, CHO-K1, C6, Ramos lysates using RPS20 antibody.

This product is suitable for in-vitro studies under the RESEARCH USE ONLY [RUO] licence. This product must not be used as for diagnostic or other medical purposes.

St John's Laboratory Ltd, Knowledge Dock Business Centre, University Way, London, E16 2RD | Tel: 0208 223 3081