

Anti-RBM3 antibody (133-147 aa) [R02-0C1] (STJA0012570)

STJA0012570

GENERAL INFORMATION

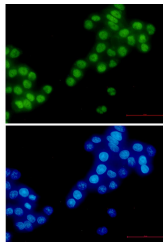
Product Type	Primary antibodies
Short Description	Rabbit monoclonal antibody anti-RBM3 (133-147 aa) is suitable for use in Western Blot, Immunocytochemistry and Immunofluorescence research applications.
Applications	WB/ICC/IF
Host/Source	Rabbit
Reactivity	Human/Mouse

PRODUCT PROPERTIES

Clonality	Monoclonal
Clone ID	R02-0C1
Concentration	0.3 mg/ml
Conjugation	Unconjugated
Purification	Affinity Purified
Dilution Range	WB 1:500-1:1000 IF 1:50-1:200
Formulation	50mM Tris-Glycine (pH7.4) , 0.15M NaCl, 40% Glycerol, 0.01% Sodium azide and 0.05% BSA
Isotype	IgG
Storage	Store at 4°C short term. Aliquot and store at -20°C long term. Avoid freeze/thaw cycles.
Instruction	

TARGET INFORMATION

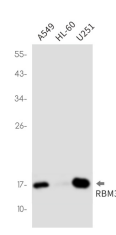
Gene ID	5935
Gene Symbol	RBM3
Uniprot ID	RBM3_HUMAN
Immunogen	A synthetic peptide of human RBM3
Immunogen Region	133-147 aa
Specificity	
Immunogen Sequence	



Immunocytochemistry analysis of RBM3 (green) in hela using RBM3 antibody, and DAPI (blue)



Western blot analysis of RBM3 in 3T3, mouse brain lysates using RBM3 antibody.



Western blot analysis of RBM3 in A549, HL-60, U251 lysates using RBM3 antibody.

This product is suitable for in-vitro studies under the RESEARCH USE ONLY [RUO] licence. This product must not be used as for diagnostic or other medical purposes.
St John's Laboratory Ltd, Knowledge Dock Business Centre, University Way, London, E16 2RD | Tel: 0208 223 3081