

## Anti-RAD50 antibody (1-425 aa) [R07-8C0] (STJA0012563)

STJA0012563

### GENERAL INFORMATION

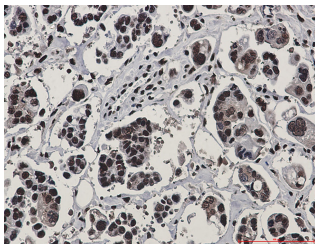
<b>Product Type</b>	Primary antibodies
<b>Short Description</b>	Rabbit monoclonal antibody anti-Rad50 (1-425 aa) is suitable for use in Western Blot and Immunohistochemistry research applications.
<b>Applications</b>	WB/IHC-P
<b>Host/Source</b>	Rabbit
<b>Reactivity</b>	Human

### PRODUCT PROPERTIES

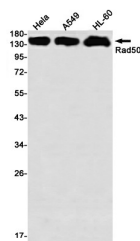
<b>Clonality</b>	Monoclonal
<b>Clone ID</b>	R07-8C0
<b>Concentration</b>	0.3 mg/ml
<b>Conjugation</b>	Unconjugated
<b>Purification</b>	Affinity Purified
<b>Dilution Range</b>	WB 1:500-1:1000 IHC 1:50-1:100
<b>Formulation</b>	50mM Tris-Glycine (pH7.4) , 0.15M NaCl, 40% Glycerol, 0.01% Sodium azide and 0.05% BSA
<b>Isotype</b>	IgG
<b>Storage Instruction</b>	Store at 4°C short term. Aliquot and store at -20°C long term. Avoid freeze/thaw cycles.

### TARGET INFORMATION

<b>Gene ID</b>	10111
<b>Gene Symbol</b>	RAD50
<b>Uniprot ID</b>	RAD50_HUMAN
<b>Immunogen</b>	Recombinant protein of human Rad50
<b>Immunogen Region</b>	1-425 aa
<b>Specificity</b>	
<b>Immunogen Sequence</b>	



Immunohistochemistry analysis of paraffin-embedded Human Cholangiocarcinoma using Rad50 antibody. High-pressure and temperature Sodium Citrate pH 6.0 was used for antigen retrieval.



Western blot analysis of Rad50 in HeLa, A549, HL-60 lysates using Rad50 antibody.