

## Anti-PREPL antibody (451-651 aa) [R08-8A2] (STJA0012544)

STJA0012544

### GENERAL INFORMATION

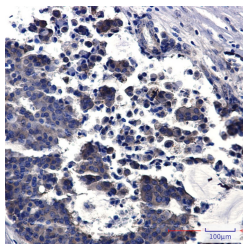
<b>Product Type</b>	Primary antibodies
<b>Short Description</b>	Rabbit monoclonal antibody anti-PPCEL (451-651 aa) is suitable for use in Western Blot, Immunohistochemistry and Immunoprecipitation research applications.
<b>Applications</b>	WB/IHC-P/IP
<b>Host/Source</b>	Rabbit
<b>Reactivity</b>	Human/Mouse/Rat/Hamster

### PRODUCT PROPERTIES

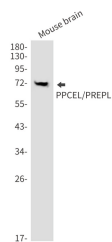
<b>Clonality</b>	Monoclonal
<b>Clone ID</b>	R08-8A2
<b>Concentration</b>	0.3 mg/ml
<b>Conjugation</b>	Unconjugated
<b>Purification</b>	Affinity Purified
<b>Dilution Range</b>	WB 1:500-1:1000 IHC 1:50-1:100 IP 1:20
<b>Formulation</b>	50mM Tris-Glycine (pH7.4) , 0.15M NaCl, 40% Glycerol, 0.01% Sodium azide and 0.05% BSA
<b>Isotype</b>	IgG
<b>Storage</b>	Store at 4°C short term. Aliquot and store at -20°C long term. Avoid freeze/thaw cycles.
<b>Instruction</b>	

### TARGET INFORMATION

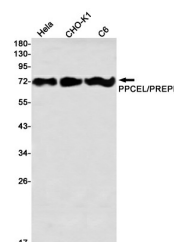
<b>Gene ID</b>	9581
<b>Gene Symbol</b>	PREPL
<b>Uniprot ID</b>	PPCEL_HUMAN
<b>Immunogen</b>	Recombinant protein of human PPCEL/PREPL
<b>Immunogen Region</b>	451-651 aa
<b>Specificity</b>	
<b>Immunogen Sequence</b>	



Immunohistochemistry analysis of paraffin-embedded Human breast cancer using PPCEL/PREPL antibody. High-pressure and temperature Sodium Citrate pH 6.0 was used for antigen retrieval.



Western blot analysis of PPCEL/PREPL in mouse brain lysates using PPCEL antibody.



Western blot analysis of PPCEL/PREPL in HeLa, CHO-K1, C6 lysates using PPCEL/PREPL antibody.