

## Anti-PF4 antibody (87-100 aa) [R02-1E3] (STJA0012533)

STJA0012533

### GENERAL INFORMATION

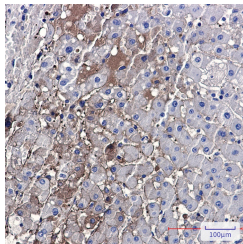
<b>Product Type</b>	Primary antibodies
<b>Short Description</b>	Rabbit monoclonal antibody anti-PF4 (87-100 aa) is suitable for use in Western Blot, Immunohistochemistry and Immunoprecipitation research applications.
<b>Applications</b>	WB/IHC-P/IP
<b>Host/Source</b>	Rabbit
<b>Reactivity</b>	Human/Rat

### PRODUCT PROPERTIES

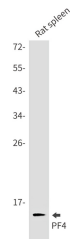
<b>Clonality</b>	Monoclonal
<b>Clone ID</b>	R02-1E3
<b>Concentration</b>	0.3 mg/ml
<b>Conjugation</b>	Unconjugated
<b>Purification</b>	Affinity Purified
<b>Dilution Range</b>	WB 1:500-1:1000 IHC 1:50-1:100 IP 1:20
<b>Formulation</b>	50mM Tris-Glycine (pH7.4) , 0.15M NaCl, 40% Glycerol, 0.01% Sodium azide and 0.05% BSA
<b>Isotype</b>	IgG
<b>Storage</b>	Store at 4°C short term. Aliquot and store at -20°C long term. Avoid freeze/thaw cycles.
<b>Instruction</b>	

### TARGET INFORMATION

<b>Gene ID</b>	5196
<b>Gene Symbol</b>	PF4
<b>Uniprot ID</b>	PLF4_HUMAN
<b>Immunogen</b>	A synthetic peptide of human PF4
<b>Immunogen Region</b>	87-100 aa
<b>Specificity</b>	
<b>Immunogen Sequence</b>	



Immunohistochemistry analysis of paraffin-embedded liver cancer using PF4 antibody. High-pressure and temperature Sodium Citrate pH 6.0 was used for antigen retrieval.



Western blot analysis of PF4 in rat spleen lysates using PF4 antibody.



Western blot analysis of PF4 in A549, HL-60 lysates using PF4 antibody.